

SECTION-A

Q1) Say True or False

[5M]

a) Zero is neither a negative integer nor a positive integer.

b)



Is an open curve.

c) The place value of 7 in 378965201 in the Indian system is Crores.

d) Octagon has 9 sides.

e) A line segment has 2 end points.

Q2) Match the following

[6M]

A

B

1) The letter E has a

2) Successor of 349551 is

3) 35

4) The letter O has a

5) 20

6) Centre

a) infinite lines of symmetry

b) a point equidistant from Circumference

c) 349552

d) multiple of 7

e) one line of symmetry

f) multiple of 4

Q3) Complete the following Table

[3M]

Given number	Approximate to nearest	Rounded Form
75847	Tens	
75847	Hundreds	
75847	Thousands	
75847	Ten Thousand	

SECTION-B (Any 8)

[16M]

Q4) Write first five Multiples of 8 .

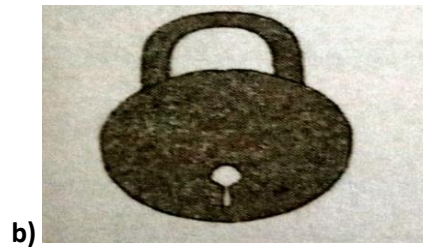
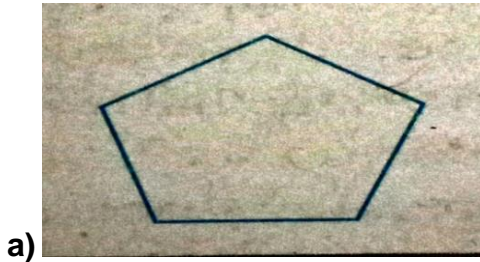
Q5) Write all the odd numbers between 1 to 20.

Q6) Draw one diagram of each of the following

a) Open Curve

b) Closed Curve

Q7) Check the following shapes are Symmetrical or not, Draw the line of Symmetry as well.



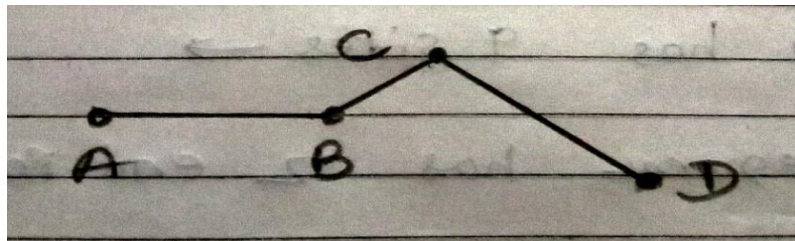
Q8) Using digits 7,8,9,5 only once make Smallest 4-digit number and Greatest 4-digit number.

Q9) Insert commas and write the number name for the given number in the Indian system and expand it also.

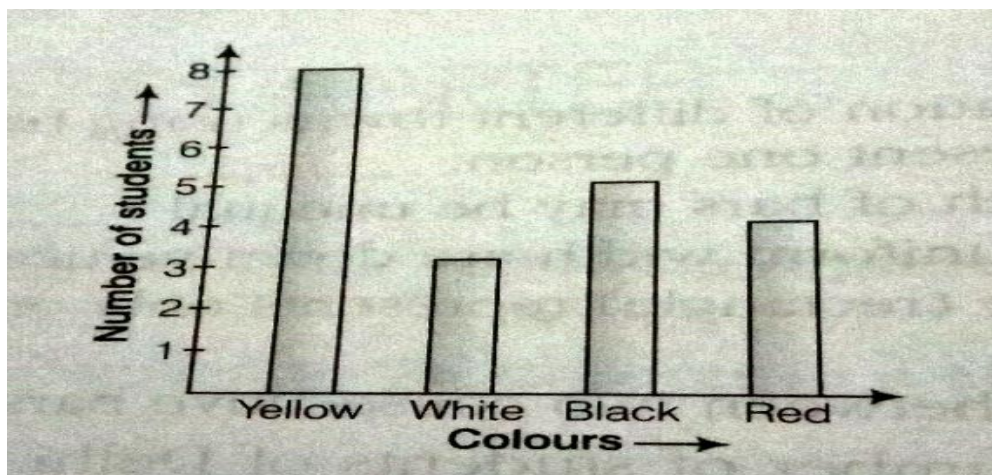
2300965

Q10) Various Line Segments in the following figure are

_____ , _____ , _____ .



Q11) Following bar graph represents the choice of colours in respect of the students of class VI



In the above bar graph, if 1 unit =2 students, then complete the following table

No.of. colours	Yellow	white	Black	Red
No.of. Students				

Q12) Use number line and add the following integers. (any 1)

- a) $7+(-2)$ b) $3+(-8)$

[Section C]

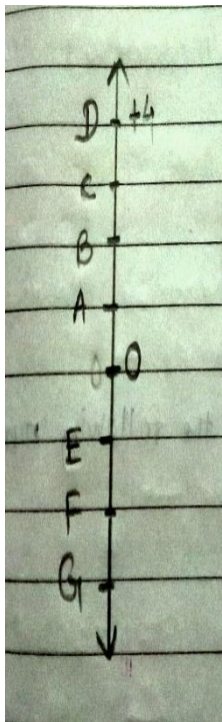
(any 4)

[12M]

Q13) Draw one example of each of the following diagrams.

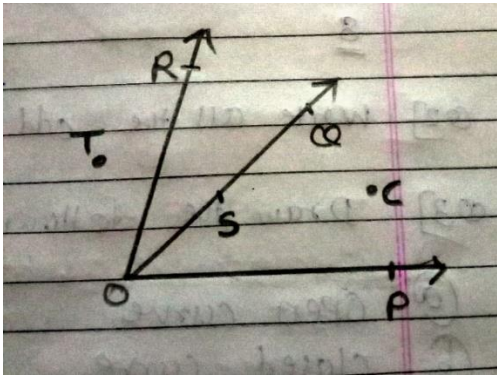
- a) With no line of symmetry
b) With one line of symmetry
c) With two lines of symmetry

Q14) Adjacent figure is a vertical number line, representing integers, observe it and locate the following points.



- a) If point D is +4, then which point is -3?
b) Write the integer for point B
c) Is point A is a negative integer or a positive integer?

Q15) In the Given Diagram name the points.

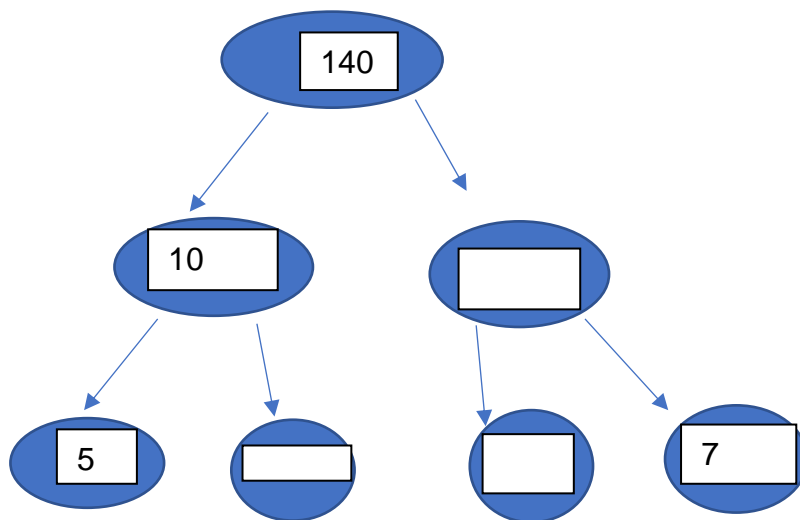


- a) In the interior of $\angle POQ$
- b) In the exterior of $\angle QOR$
- c) Points on $\angle QOR$

Q16) Find the HCF of following numbers.

120 and 150

Q17) Use the factor tree method and fill the circles.



Q18) Find the LCM of following numbers.

45 and 60

[Section D]

(any 2)

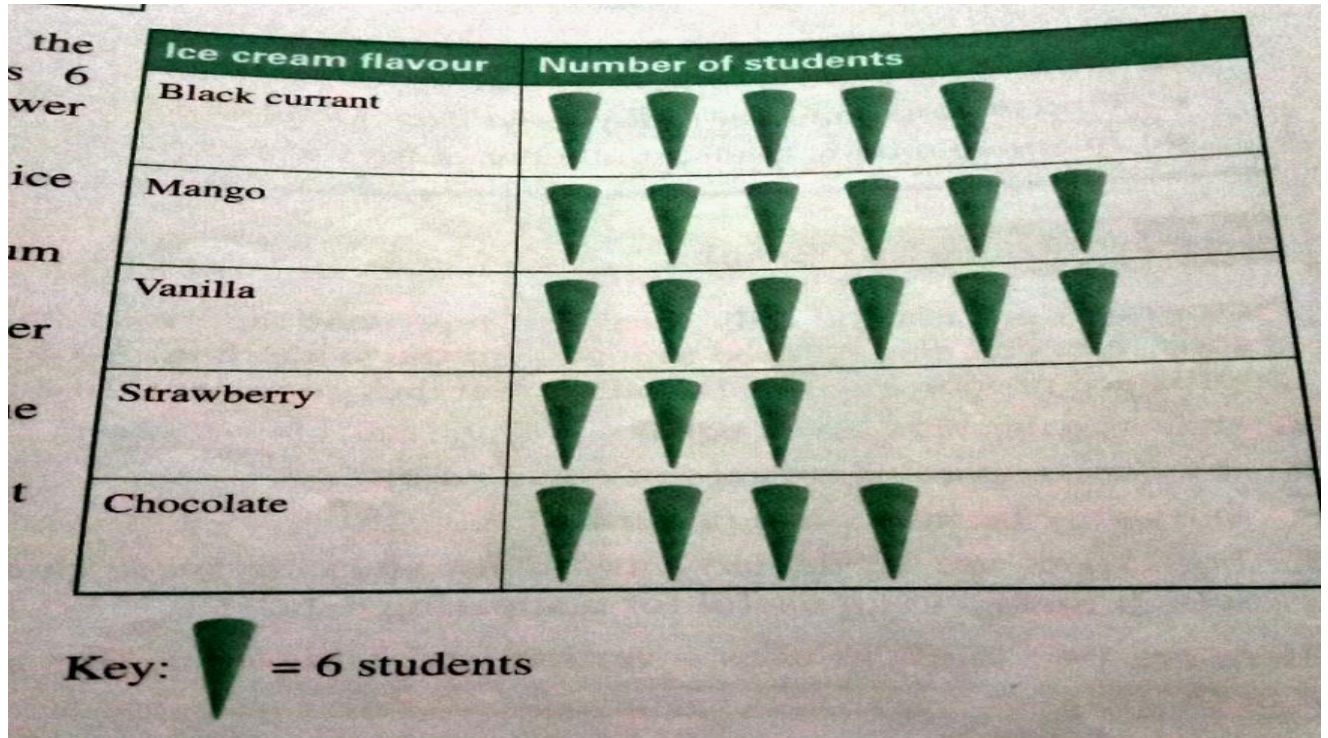
[8M]

Q19) Draw any Circle and Mark

- | | |
|-------------------------------|----------------------------|
| a) Its Centre | b) a radius |
| c) a diameter | d) a chord |
| e) two points in the interior | f) a point in the exterior |
| g) a sector | h) a segment |

Q20) In an election, the successful candidate registered 6,99,500 votes and his nearest rival secured 2,18,800 votes. By what margin did the successful candidate win the election?

Q21) The Pictograph shown here shows the favourite ice cream flavour of class 6 students. Observe the pictograph and answer the questions below.



- a) How many students favourite flavour ice-cream is vanilla?
- b) Which flavour is liked by the maximum no. of students?
- c) Which flavour is liked by the minimum no. of students?
- d) Which flavour is liked by the same no. of students?
- e) How many students like Black current and strawberry altogether?

Q22) Add without using number line.

- a) $-7+(-6)$
- b) $-16+(+17)$
- c) $45+(-45)$
- d) $-28+(+25)$