

The background features abstract, overlapping geometric shapes in various shades of blue, ranging from light sky blue to deep navy blue. These shapes are primarily located on the left and right sides of the frame, creating a modern, dynamic feel. The central area is a clean, white space where the text is placed.

# *OUR HELPERS*



# *DOCTOR*

➤ DOCTORS TREATS US WHEN WE ARE ILL



# ***NURSE***

➤ **NURSE TAKE CARE OF US WHEN WE ARE ILL.**



# ***FARMER***

➤ **FARMERS GROWS FOOD FOR US**







# COBBLER

➤ COBBLERS MEND SHOES FOR US

➤ HE POLISH THE SHOES



# CHEF

➤ **PLAN THE MENU**

➤ **COOK THE DIFFERENT FOOD .**



# TAILOR

➤ **TAILOR STITCHES CLOTHS FOR US.**





# ELECTRICIAN

➤ **ELECTRICIAN REPAIRS ELECTRICAL**

**APPLIANCES**





# TEACHER

➤ **TEACHER TEACHES US**



# SCIENTIST

➤ **PLAN AND CONDUCT EXPERIMENTS.**





# MILKMAN

➤ **MILKMAN BRINGS MILK FOR US.**







# SOLDIER

➤ **SOLDIER GUARDS OUR BOUNDARIES.**



# POLICEMAN

➤ **POLICE HELPS US WHEN WE NEED**



# GARDENER

➤ **GARDENER TAKES CARE OF PLANTS.**





# IRON-SMITH

➤ **HE MAKES UTENSILS FOR US.**





# ARTIST

➤ **ARTIST MAKES SKETCH FOR US**





# BEAUTICIAN

➤ **CUTTING THE HAIR, COLORING HAIR**

**MASSAGING AND TREATING SCALPS**

➤ **MAKE UP FOR BRIDES.**



# BARBER

➤ **BARBER CUTS OUR HAIR.**







# CARPENTER

➤ **CARPENTER MAKES FURNITURE FOR US.**



# DRIVER

➤ **DRIVER DRIVES OUR BUS.**



# POSTMAN

➤ **POSTMAN BRINGS OUR LETTER.**





# PLUMBER

➤ **INSTALLING AND MAINTANING PIPE,TAP**





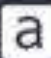
# SHOPKEEPER

➤ **SHOPKEEPER PROVIDS US DAILY**

**GOODS.**





 alamy stock photo

Free trial  
[www.alamy.com](https://www.alamy.com)



# WASHERMAN

➤ **WAHSERMAN WHO WASHES OUR CLOTHS.**



# LAWYER

➤ **PROVIDING LEGAL ADVICE AND  
GUIDANCE.**



alamy

Image ID: BE8JHM  
www.alamy.com

# PORTER

➤ **PORTER CARRIES OUT OUR BAGGAGE.**





# MECHANIC

➤ **MECHANIC REPAIR OUR VEHICLES.**



# SWEEPER

➤ **SWEEPER CLEANS DRAINS AND  
ROADS.**



# FIREMAN

➤ FIREMAN SAVES US FROM FIRE.

# WATCHMAN

➤ **WATCHMAN GUARDS OUR HOME AND  
SOCIETY**

# COMMUNITY HELPERS

Teachers teach us ABCs  
Shapes and colors, 123s.  
Doctors help us when we're  
sick,

Medicine will do the trick.  
Firefighters put out fires.  
Mechanics fix our cars and  
tires.

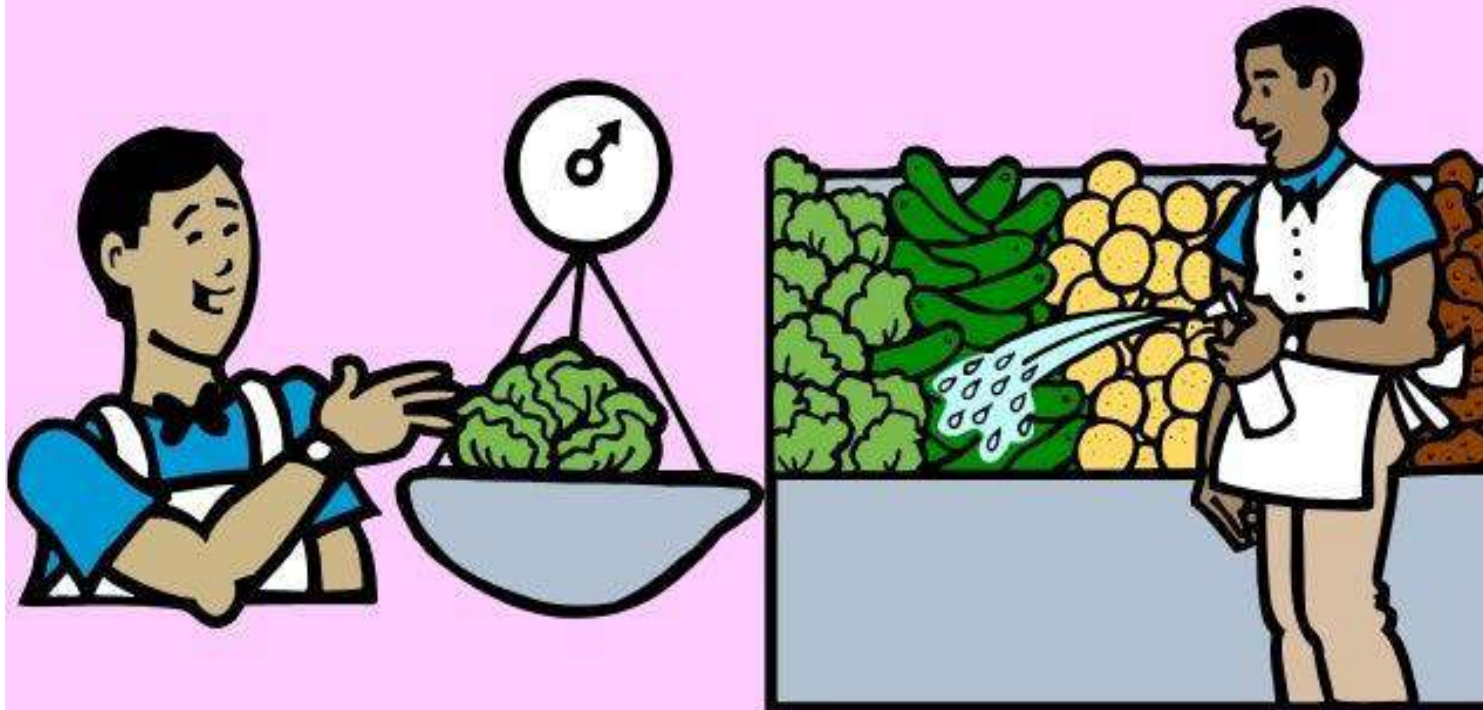
Police help keep things safe for  
you.

What job do you want to do?




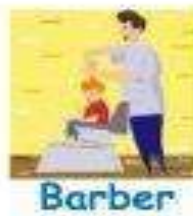
# Green Grocer

- The grocer sells food and products that people might need to buy in the grocery store.
- He uses a weighing scale to weigh things.

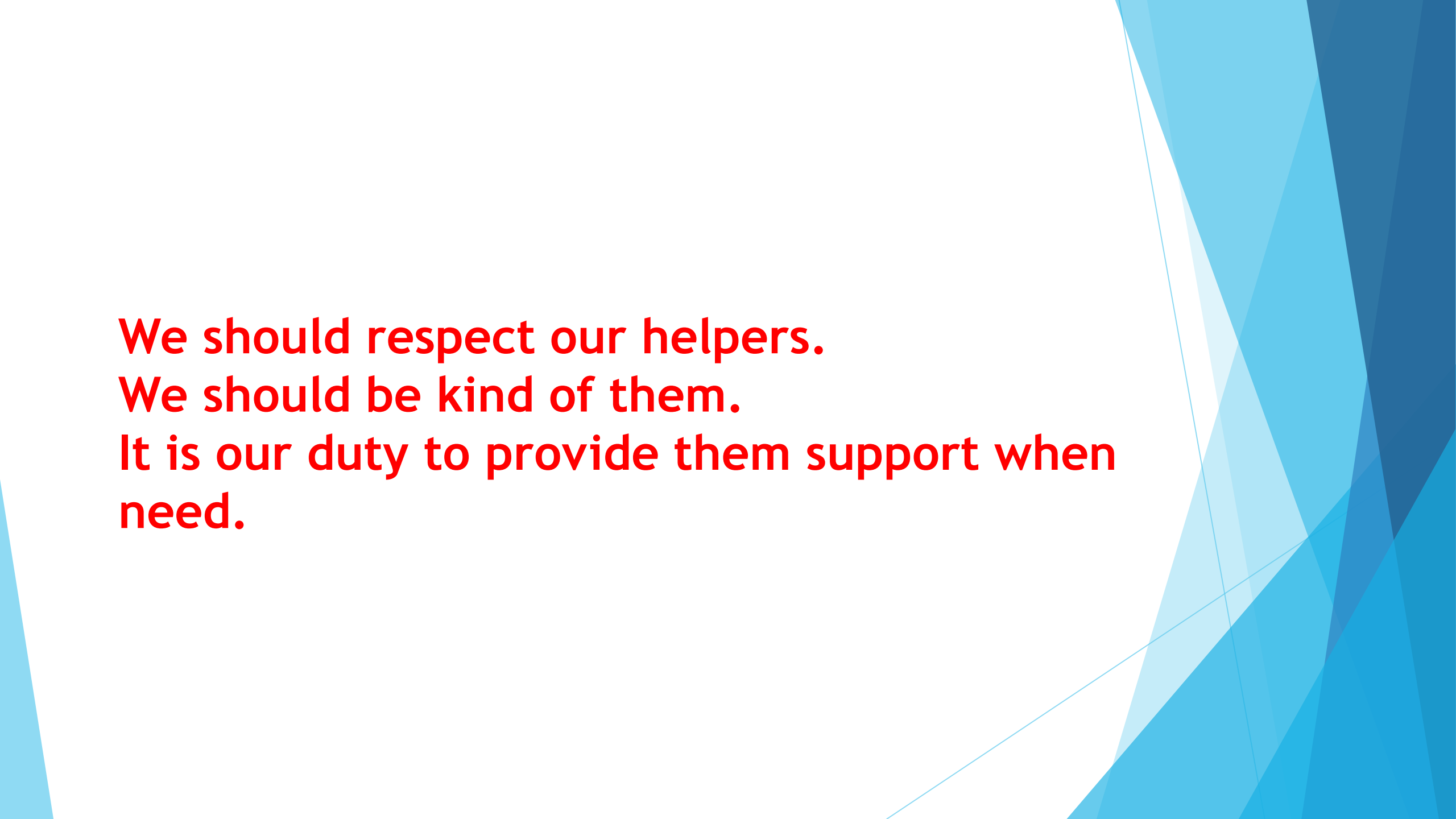


Fill in the blanks with the help of suitable pictures from below :

1. The \_\_\_\_\_ gives us medicines.
2. We drop our letters in the \_\_\_\_\_.
3. The \_\_\_\_\_ grows crops for us.
4. A \_\_\_\_\_ uses 
5. The \_\_\_\_\_ catches thieves.





The background features abstract, overlapping geometric shapes in various shades of blue, ranging from light sky blue to deep navy blue. These shapes are primarily located on the right side of the frame, creating a modern, dynamic feel.

**We should respect our helpers.  
We should be kind of them.  
It is our duty to provide them support when  
need.**