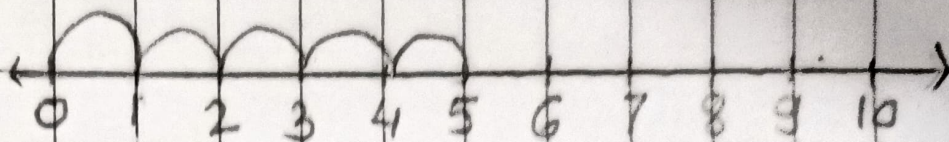


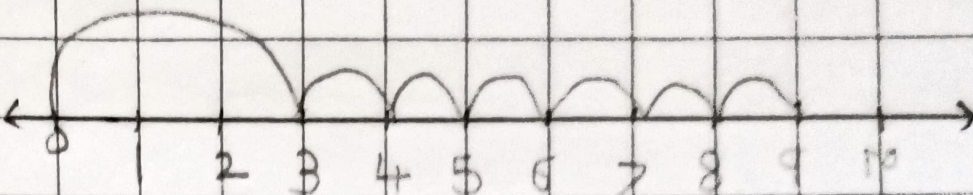
H.W.

# Number Line Addition to 10

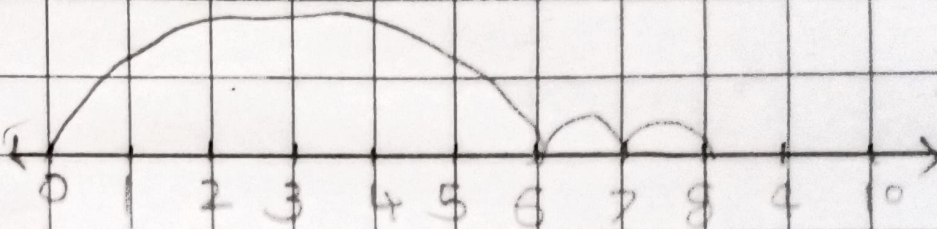
$$1 + 4 = 5$$



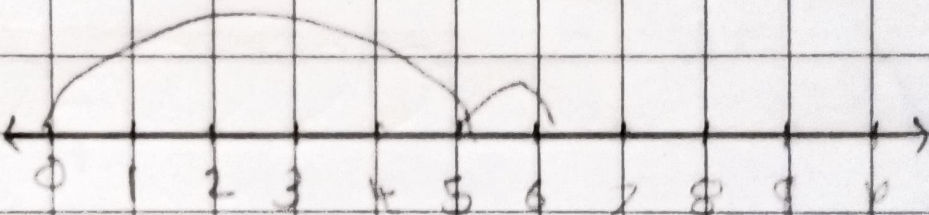
$$3 + 6 = 9$$



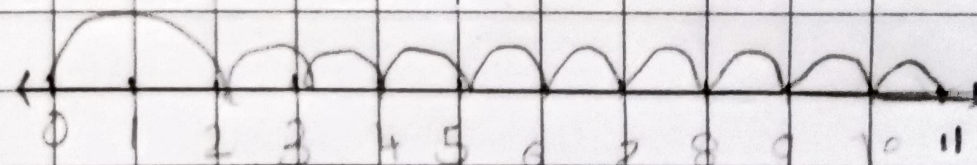
$$6 + 2 = 8$$



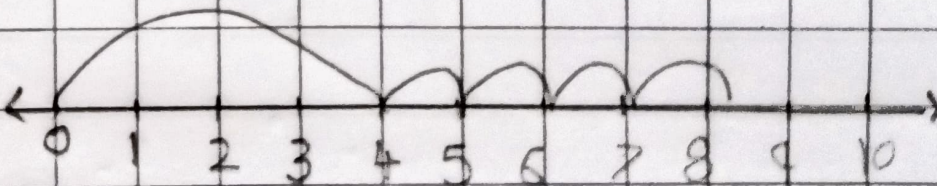
$$5 + 1 = 6$$



$$2 + 9 = 11$$



$$4 + 4 = 8$$





How

Let us learn to add using an abacus.

To add 5 and 2:

Step 1: Put 5 brown beads.

Step 2: Put 2 blue beads over the blue beads.

How many beads are there in all? There are 7 beads.

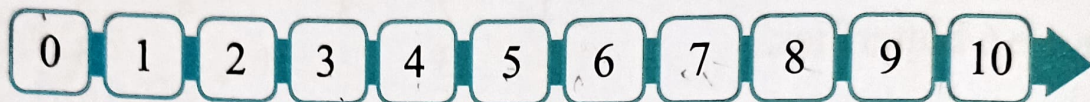


$$5 + 2 = 7$$



## Exercise

Add by forward counting.



$$8 + 1 = 9$$

$$5 + 4 = 9$$

$$3 + 2 = 5$$

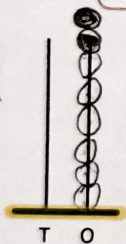
$$7 + 3 = 10$$

$$4 + 4 = 8$$

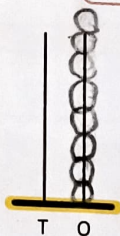
$$9 + 1 = 10$$

Add using an abacus. You may draw beads of blue and brown colours.

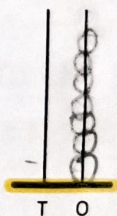
$$6 + 2 = 8$$



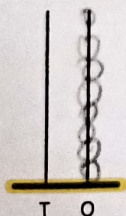
$$3 + 5 = 8$$



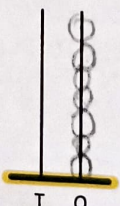
$$4 + 3 = 7$$



$$7 + 1 = 8$$



$$2 + 5 = 7$$



$$1 + 4 = 5$$

